

Inbound Release Platform

Product sheet for
customs representatives &
Logistic Service Providers



What is the Inbound Release Platform (IRP)?

The Inbound Release Platform (IRP) is a digital platform that facilitates communication between actors within the supply chain and Belgian customs. The platform centralises legally required information upon bringing goods into the EU. It digitises the complex declaration and control process for incoming goods at ports and makes information flows transparent and reliable. The platform supports all cargo flows (RORO, ferry, container, breakbulk and bulk) in a single process.

New electronic customs system (PN/TS)

In June 2024, Belgian Customs' new electronic PN/TS notification system will go live. Said PN/TS system falls within the scope of European legislation. It concerns a new customs system for reporting and inspecting goods upon arrival in the EU. All parties involved must adapt to the mandatory use of that system. This poses a significant challenge to companies in the logistics chain. IRP helps companies interact with the PN/TS system and bundles various data elements into an accurate declaration.

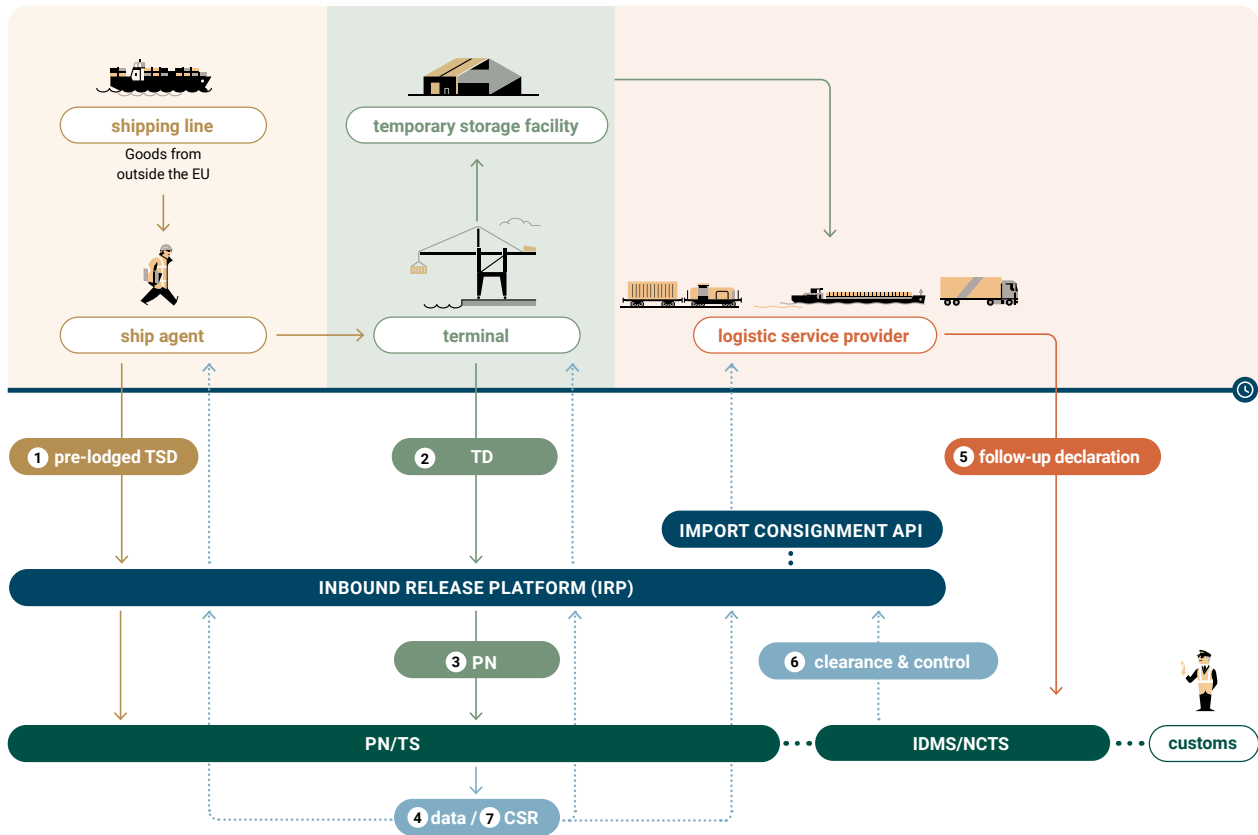
IRP brings the solution

Under the new regulations, ship agents and terminals have to submit declarations to correctly report goods to customs. Those messages contain more data elements and the process is more extensive and complex than today. The IRP allows for data sharing between ship agents, terminals and the other players in the logistics chain. Through IRP, companies can more easily fulfil their obligations in a transparent and efficient process, with manageable costs and limited own investment.

The IRP includes the Temporary Storage Declaration (TSD), the Presentation Notification (PN), the Re-export notification (REN), and transit notification in case of transshipment. With IRP, the submission of pre-arrival (pre-lodged) declarations is efficient and can be automated.

Status updates on release and checks for all declarations are forwarded to the IRP by the customs systems. This information allows the IRP to send release messages (CSRs) to all types of goods for all parties in the chain. Specifically for terminals, the IRP also includes the mandatory RTO inventory management.

Inbound Release Platform Flowchart Goods from outside the EU



- 1** The new PN/TS system applies to goods brought into the EU by a shipping company through a Belgian port. Before unloading the goods at the terminal, the ship agent sends a Temporary Storage Declaration (TSD) to the Inbound Release Platform (IRP). IRP checks and processes this data and forwards it to the PN/TS system.
- 2** Once the goods are unloaded at the terminal, the terminal operator sends a simple 'Terminal Discharge Message' (TD) to IRP.
- 3** IRP uses data from the TSD and TD message and automatically sends a Presentation Notification (PN) to PN/TS on behalf of the terminal.
- 4** The data received or generated by IRP, along with status updates of the release and verification process, are shared by the platform with ship agents and terminals.
- 5** Customs agents, importers or logistics service providers (LSPs) receive all necessary information from IRP via the Import Consignment API. That information allows for a more efficient preparation and submission of the follow-up declaration in customs's IDMS or NCTS system. The API also allows for further automation. Transport companies can also use the data from IRP to optimise their transportation planning.
- 6** Customs carries out any documentary and/or physical inspections and relays the inspection and discharge data back to the IRP.
- 7** Once customs confirms to IRP that all declarations have been released, IRP automatically creates a Customs Status Release and the goods are customs-cleared and ready to leave the terminal.

The Import Consignment API

The Import Consignment API is part of the Inbound Release Platform and will allow hinterland stakeholders to retrieve data of the ship agent's temporary storage declaration as well as status updates on the declaration process in the port.

The API will improve the transparency of the port process for all stakeholders involved.

Parties that do not (yet) want to integrate the API in their systems can retrieve the same data from the IRP user interface.

Who should use the Import Consignment API?

1. Declarants of Customs Declarations (IDMS/NCTS)
2. Logistics service providers
3. Industrial companies and distribution centers
4. Software developers to integrate the API in their applications



The Import Consignment API has a 5 step process

1 Subscribe to your shipment's data	2 Retrieve (adjusted) data and updates automatically whenever the Ship Agent enters or changes the TS declaration	3 Be informed in real time of the unloading of the shipment at the terminal	4 Receive information on any applicable customs controls	5 Receive the Customs Status Release message at the same time as the Ship Agent and Terminal
--	---	--	---	---

Benefits

In your declaration process

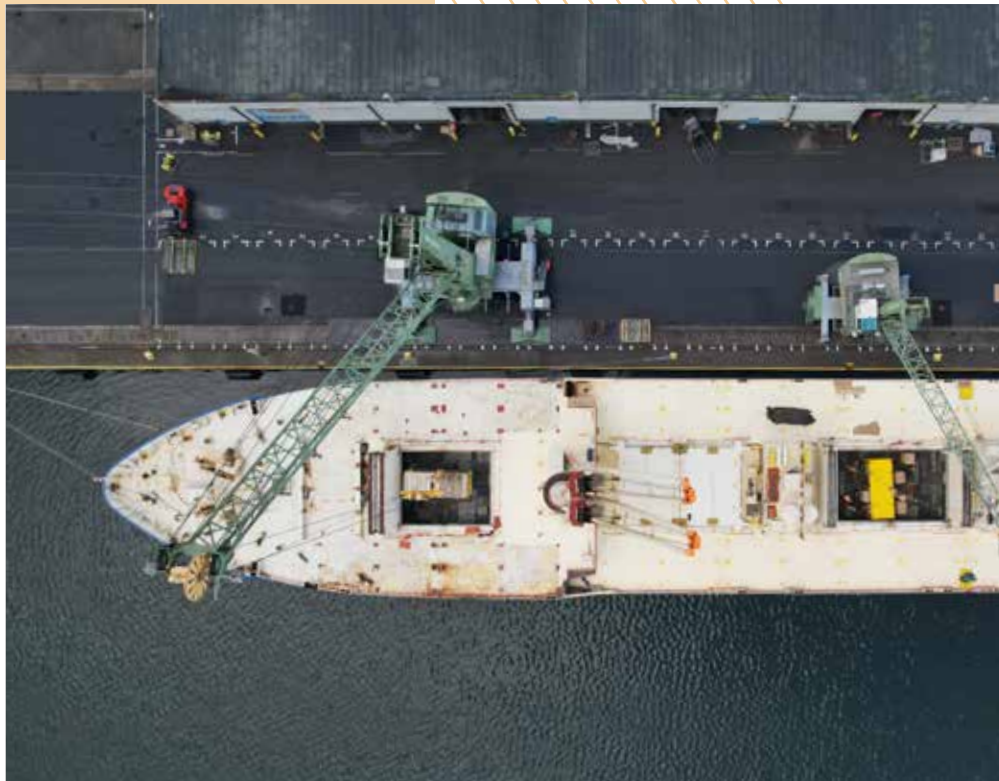
- The IRP acts as 'Single source of truth' in the new, more complex declaration process.
- Less typing through reuse of data
- Less calling and e-mailing to ship agents to retrieve freight list information
- Cross-check of freight list data to avoid write off errors
- Possibility to automate the pre-lodged declaration process
- Transparency of the inbound port process: automatic status updates

In your transportation planning process

- Real time info on the unloading of your shipment, customs controls, etc.
- Plan your pick-up at terminal earlier and more efficiently
- Link the IRP to your TMS for automation of (multimodal) transport planning

Rates

- 3000 Euro yearly subscription fee for use of User Interface and API
- 0.25 Euro per retrieved Temporary Storage Declaration.



Website

The **inboundrelease.com** website is currently live, providing clients with all information related to the legal background, the implementation and the onboarding procedure.



Contact us

For questions about the contract or technical implementation, please contact **inboundrelease@nxtport.com**.